

Monitor Current Smartly and Safely

R718N / NL / ND / NDE Series

Wireless Single-Phase / 3-Phase Current Meter

Wireless Light Sensor and Single-Phase / 3-Phase Current Meter



Netvox provides a wide range of Single-Phase and Three-Phase CT (Current Transformer) options for alternating current, allowing you to monitor currents without the need to directly handle heavy currents. This ensures your safety while monitoring current levels.

No matter which field you are in, our CTs can meet your requirements and provide a safer and more reliable solution for current monitoring.

R718N Series - (CT + Battery power supply)

Battery-Powered : Can be used in the environments without any power supply and enhances the flexibility during installation.

R718NL Series - (CT + Light sensor + Battery power supply)

Newly Added Light Sensor : The combination of CT with a light sensor ensures your safety by using the light sensor to detect if someone opens the electrical boxes or performs other operations.

R718NxxD Series - (CT+ DC power supply)

DC-Powered : Supplying CT with direct current enables more frequent reporting of current data and ensures the accuracy of the collected data.

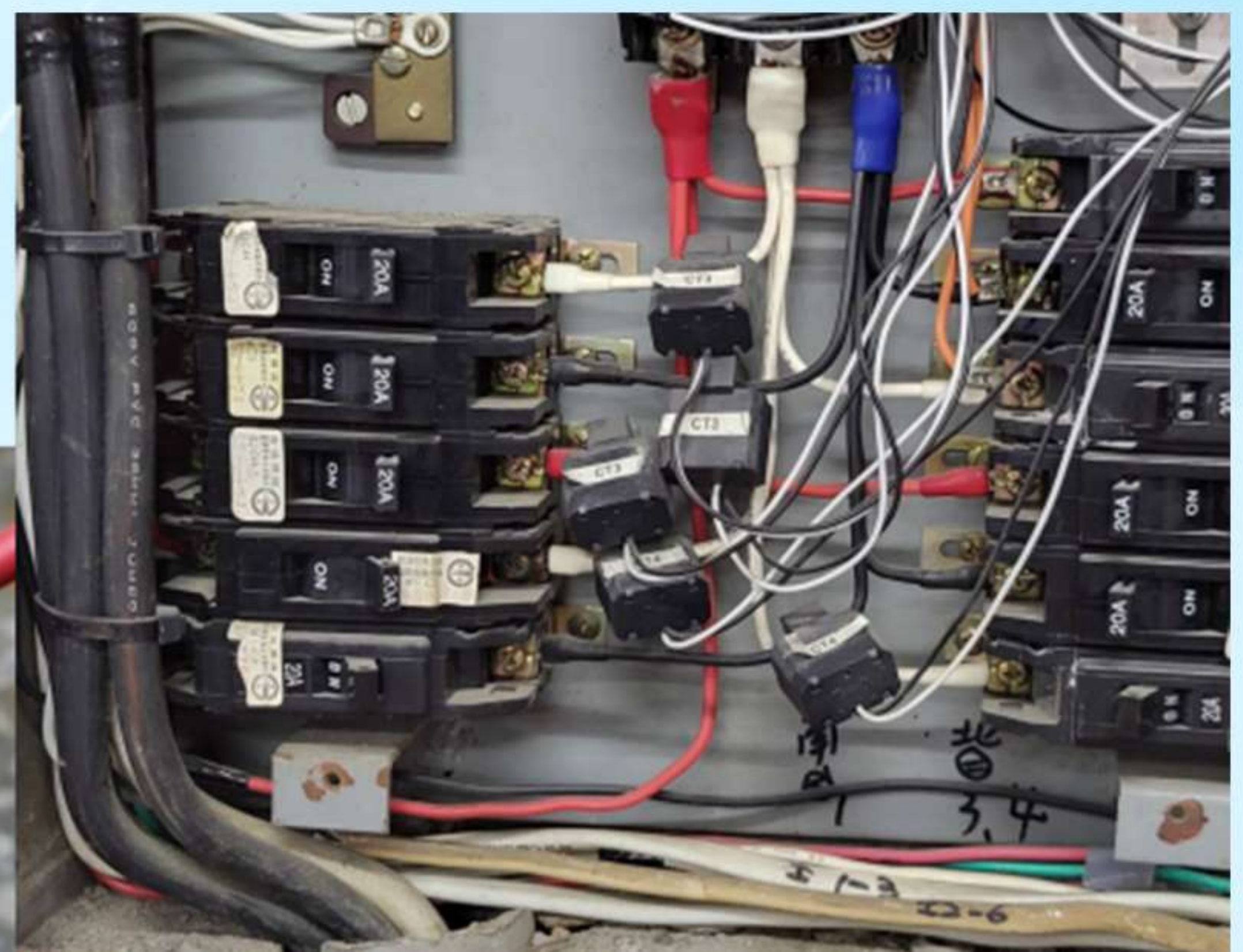
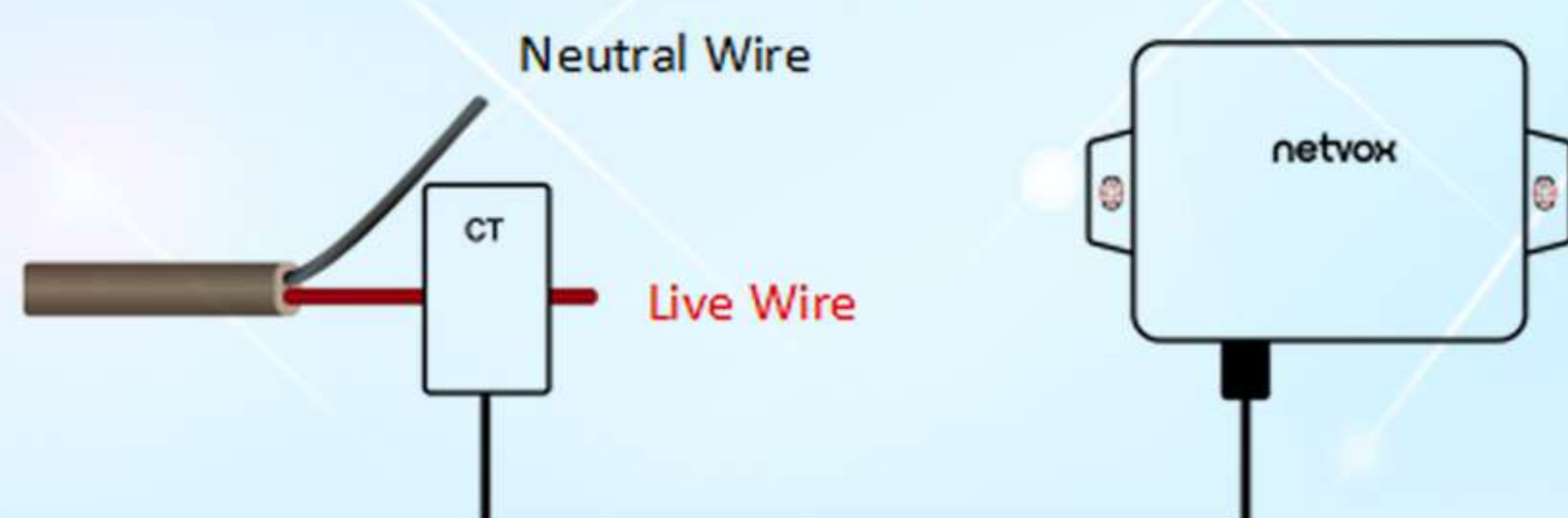
R718NxxDE Series - (Detachable CT+ DC power supply)

Detachable CT provides greater flexibility in wiring arrangements and facilitates easier adjustment of the CT, thereby improving the maintainability of the equipment.



How-to-Install?

When installing the current transformer, separate the live and neutral wires, and take out the live wire separately and start the measurement.



-R718N1-Series-

R718N17	R718N115	R718N125
		
R718N163	R718N1300	
		

-R718N3-Series-

R718N37	R718N315	R718N325
		
R718N360	R718N363	R718N3300
		

-R718NL1-Series-

R718NL17	R718NL115	R718NL125	R718NL163
			







R718NL3-Series

R718NL37	R718NL315	R718NL325	R718NL363
			

R718N1xD-Series

R718N17D	R718N115D	R718N125D
		
R718N163D	R718N1300D	
		

R718N3xD-Series

R718N37D	R718N315D	R718N325D
		
R718N360D	R718N363D	R718N3300D
		

R718N3xxDE-Series



R718N3xxx detachable clamp-on CT

R718N-Series

Measurement Range



【 1 - phase 】

R718N17/NL/ND/NDE: 100mA to 75 A (Clamp-On CT)

R718N115/NL/ND/NDE : 1A to 150 A (Clamp-On CT)

R718N125/NL/ND/NDE : 1A to 250 A (Clamp-On CT)

R718N163/NL/ND/NDE : 5A to 630 A (Clamp-On CT)

R718N1300/ND/NDE : 150A to 3000 A (Clamp-On CT)

【 3 - phase 】

R718N37/NL/ND/NDE : 100mA to 75 A (Clamp-On CT)

R718N315/NL/ND/NDE : 1A to 150 A (Clamp-On CT)

R718N325/NL/ND/NDE : 1A to 250 A (Clamp-On CT)

R718N363/NL/ND/NDE : 10A to 630 A (Clamp-On CT)

R718N360/ND : Depending on the specifications of external CT (CT Interface)

R718N3300/ND/NDE : 150A to 3000 A (Clamp-On CT)

Comparative Table

	R718N Series	R718NL Series	R718NxxD Series	R718NxxDE Series
Power	ER14505*2	ER14505*2	DC 3.3V / 1A	DC 3.3V / 1A
LoRaWAN Classes	Class A	Class A	Class C	Class C
IP Rating	Main body: IP53 Sensor: IP30	Main body: IP53 Sensor: IP30	Main body: IP30 Sensor: IP30	Main body: IP30 Sensor: IP30
CT Wiring	Non-detachable	Non-detachable	Non-detachable	Detachable
CT Wiring Length	900mm	900mm	900mm	1200mm
Light Sensor	X	0 lux - 157K lux	X	X